

0.85t31m electric hydraulic telescopic boom marine crane for offshore service vessel

0.85t31m electric hydraulic telescopic boom marine crane for offshore service vessel

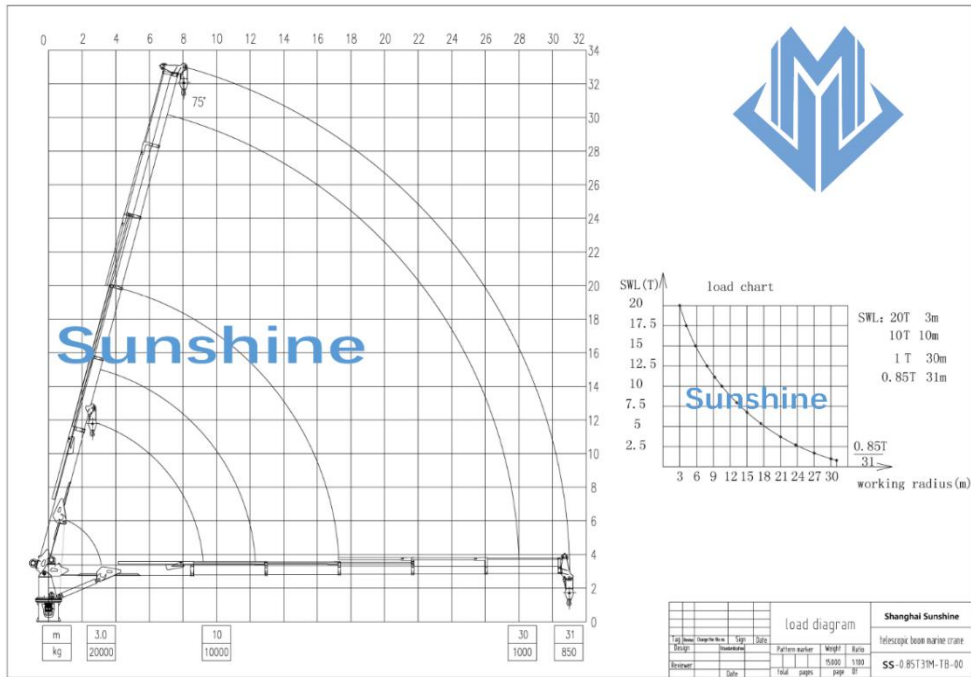
BRIEF INTRODUCTION

The telescopic box boom marine cranes and offshore cranes is designed as an electro-hydraulic powered crane. It`s a free standing deck mounted crane consisting of a pedestal, a slewing ring, a crane housing with integrated electro-hydraulic power package or independent electro-hydraulic power package, and a telescopic jib and a hoisting winch. It is delivered as a complete unit ready for installation to foundation.

Technical specification

1	SWL	0.85t@31m 20t@3m
2	Max working radius	31m
3	Min working radius	3m
4	Hoisting speed	0~12m/min
5	Slewing speed	0.7r/min
6	Slewing angle	360° free
7	Luffing time	50s
8	Hook travel	30m
9	DFT of painting	320um
10	Extension time	90s
11	Working condition	
	Heel	≤ 5°
	Trim	≤ 2°
12	Electric motor	
	Power	55Kw
	Speed	1480r/min
	Power source	440V 50Hz,
	Protect class	F
	Working type	S1
13	Flow	100L/min
14	Design temperature	-10°~40°
15	Dead weight	~15500 kg

Load chart



General drawing

